



**MEETS THE RIGORS OF
TODAY'S HIGH EFFICIENCY,
HIGH POWERED ENGINES**

INTRODUCING THE NEW SERVICE CHAMP HIGH PERFORMANCE SYNTHETIC OIL FILTER

- Specifically designed to improve the benefits of synthetic motor oils
- Filters out 99% of contaminants at 20 microns (ISO 4548-12 Multipass) for longer engine life
- Ideal media design for severe driving conditions like high temperatures, dust and dirt
- Exceptional dirt holding capacity traps more contaminants than conventional filters
- Provides extra protection for customers who wait a few extra miles between change intervals
- High performance powder coated shell meets ASTM B-116 testing standards
- Exceptional durability and burst strength
- Upgraded anti-drainback valve made of synthetic silicone materials
- Reduces friction on cold start-ups while providing increased durability at higher operating temperatures
- Provides exceptional protection during longer change intervals

TALK TO YOUR SERVICE CHAMP REP AND REV IT UP

High performance powder coated shell, ASTM B-116 tested and approved

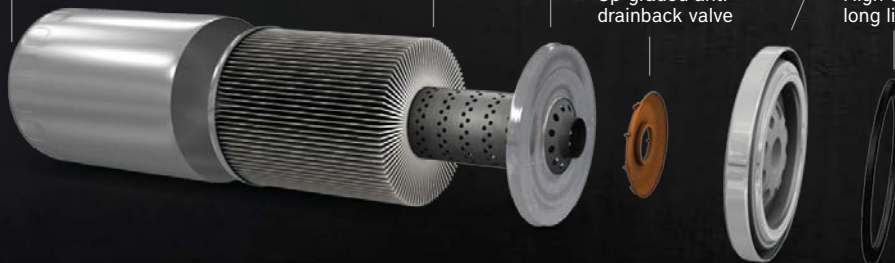
Enhanced high performance microglass media cartridge with steel center tube

Stamped steel end caps

Heavy-duty baseplate

Up-graded anti-drainback valve

High temperature long life nitrile gasket



servicechamp.com

**SERVICE
CHAMP** **REV IT UP**

800.221.0216



SERVICE CHAMP'S NEW HIGH-PERFORMANCE SYNTHETIC OIL FILTER



Part #	Synth Sku #	Champ Model	Filter Type	VIO
OF4622	HP4622	PH2876	2 1/2" Spin-on	14,771,273
Hyundai, Kia (1994-10), Infiniti, Nissan (1995-16) Mazda (1990-08, 2011-16), Subaru (2004-15) (Mazda B6Y1-14-302; Subaru 15208-KA010)				
OF4477	HP4477	PH2840	2 1/2" Spin-on	10,320,697
GEO/Chevrolet Prizm (1989-05), Scion (2004-14), Suzuki (1996-13), Toyota (1988-16) (Toyota 90915-03001)				
PH2876	PH2867	2 1/2" Spin-on	26,782,940	
Chrysler Products (1991-98, 01-05), Honda (2001-16), Infiniti (1995-16), Mitsubishi (1992-16), Mazda (1983-02, 09-11), Nissan (1995-16) (Nissan 15208-9E000; Mitsubishi MZ690072)				
OF5399	HP5399	LFP2999	3 5/8" Spin-on	1,386,684
Chevrolet & GMC Pickups 6.6L Diesel (2001-16) (AC PF2232)				
OF6128	HP6128	LFP2051	3 5/8" Spin-on	591,504
Ford Super Duty Pickup 6.7L (2011-16) (Ford BC3Z-6731-A)				
PH48	PH500	3 5/8" Spin-on	11,836,051	
Buick Enclave, Lacrosse (2011-16) Dodge/Jeep V6 3.7L (2009-12), Ford Products V6 (2009-16) (Chrysler 5184231AA)				
OF241	HP241	PH2835	3" Spin-on	23,125,377
Chrysler, Dodge (1995-11), Mazda (2011-15) Ford 4 cyl. (2003-16), Toyota				
OF4651	HP4651	PH820	3" Spin-on	22,072,496
Ford Products (1991-16), Mazda (2000-09), Chrysler, Dodge V6 & V8 (2008-15) (Ford F1AZ-6731-BD; Chrysler 4884899AB)				
OF4459	HP4459	PH2808	3" Spin-on	16,837,444
Honda (1983-09), Hyundai (1986-16), Isuzu (1984-04), Kia (2001-15), Mazda (1972-91), Mitsubishi (1987-16), Subaru (1992-97, 01-16) (Honda 15400-PR3-014, Hyundai 26300-35502; Isuzu 8971406660; Mitsubis				
OF111	HP111	PH47	3" Spin-on	14,138,980
GM Products (1975-14), Isuzu (1989-94, 96-03) (AC PF47; GM 6439929, 25010792)				
OF2222	HP2222	PH48	3" Spin-on	13,808,977
Buick, Cadillac, Chevrolet, GMC (2007-16), Chrysler, Dodge, Jeep (2007-16) (AC PF48; GM 89017524)				
OF195	HP195	PH400	3" Spin-on	11,066,906
Chrysler Products (2002-09), Ford Products (1971-09), Jaguar X Type (2000-08), Mazda 6 (2009-13), CX9 (2007-15) (Ford E1EE-6714-AA; Motorcraft FL-400A)				
OF4006	HP4006	PH44	3" Spin-on	5,770,537
American Motors, Jeep (1983-86), GM Products (1996-12) (GM 25010633)				
OF4422	HP4422	LFP780	3" Spin-on	1,754,661
Dodge/Ram Pickup Cummins Diesel Eng. (1989-16) (Cummins 3903964)				
OF5895	HP5895	PH610	3" Spin-on	1,055,948
Audi, VW Jetta 2.0L Turbo (2008-16), Tiguan (2009-15) (Volkswagen 06J-115-403C) Spin-on filter with mounting stud.				
PH44	PH59	3" Spin-on	9,060,164	
Cadillac (1972-11), GM Trucks (1999-12), Oldsmobile (1995-04), Pontiac (2004-10)				

Part #	Synth Sku #	Champ Model	Filter Type	VIO
PH400	PH561	3" Spin-on	1,443,327	
Audi (1970-06), Volkswagen (1974-15) (Volkswagen 06A-115-561B)				
CF5608	HP5608	P967	Cartridge	8,631,762
Toyota V6 3.5L (2005-16), Lexus (2007-16) (Toyota 04152-31090)				
CF5436	HP5436	P3244	Cartridge	6,452,562
Buick Regal, Lacrosse (2011-16), Chevrolet 4 cyl. 2.4L (2002-16), Pontiac 4 cyl. 2.4L (2002-10), Saturn 4 cyl. (2000-10), Saab 93, 93X (2003-11)				
CF6311	HP6311	P980	Cartridge	3,495,846
Scion xD 1.8L (2009-14); Toyota Corolla 1.8L (2009-16), Matrix 1.8L (2009-14), Prius (2010-16); Pontiac Vibe 1.8L (2009-10) (Toyota 04152-37010)				
CF6296	HP6296	P1009	Cartridge	2,702,193
Chrysler, Dodge, Jeep and Ram with V6 3.6L engine. (2014-16) (Chrysler 69191349AA)				
CF5234	HP5234	P3986	Cartridge	1,655,616
Audi, Volkswagen w/2.0L Turbo DI (2005-15), Audi, Volkswagen 5 cyl. 2.5L (2005-14), Volvo S40, V50 (2004-11), S60 (2012-14), C30, C70 (2005-13), V60 (2015) (Volkswagen 06D-115-562; Volvo 8692305, 864				
CF5274	HP5274	P2129	Cartridge	1,342,028
Cadillac CTS V6 3.6L (2004-15), SRX V6 3.6L (2004-11), STS V6 3.6L (2005-11), Chevrolet Camaro V6 3.6 (2010-15), Oldsmobile (1999-02), Pontiac G8 (2008-09), Saab 93 (2006-10), 95 (2011) (GM 25177917)				
CF5609	HP5609	P968	Cartridge	1,254,336
Lexus V6 (2006-16); Toyota 4-Runner, FJ Cruiser V6 4.0L (2010-16) (Toyota 04152-31080 (RWD), 04152-31060 (AWD))				
CF5505	HP5505	P960	Cartridge	1,156,352
Ford, Mercury Hybrid (2005-09), Mazda 4 cyl. 2.3L (2003-10), Mazda 6 (2010-11) (Mazda L321-14-302)				
CF5702	HP5702	P979	Cartridge	1,049,284
Toyota Tundra 5.7L (2007-16), Lexus LX570 (2008-15) (Toyota 04152-38020)				
CF5515	HP5515	LP2017	Cartridge	1,024,677
Ford 6.0L, 6.4L Turbo Diesel (2003-10) (Ford 3C3Z-6731-AA)				
WP1017	HP1017	P1017	Cartridge	720,189
Volkswagen Jetta, GLI (2014-16), Passat (2014-16) (Volkswagen 06L-115-466, 06L-115-562)				
CF5610	HP5610	P972	Cartridge	680,011
Hyundai V6 3.3L & 3.8L (2006-09); Kia V6 3.3L & 3.8L (2006-09) (Hyundai 26320-3C100)				
CF6135	HP6135	P990	Cartridge	1,891,664
Chrysler, Dodge, Jeep V6 3.6L (2011-13) (Chrysler 68079744AA)				
CF5277	HP5277	P985	Cartridge	1,326,769
Mercedes (2005-14) (Mercedes 0001803109)				
CF5247	HP5247	P8170	Cartridge	1,062,106
BMW 3 & 5 Series (1996-06), Z4 (2003-05) (BMW 11421427908)				
CF8154	HP8154	P2062	Cartridge	
Ford F-150 2.7L (2016-)				

**USE THIS AS A GUIDE TO
MAKE SURE YOU HAVE THE
RIGHT FILTERS IN STOCK!**

**800.221.0216
SERVICECHAMP.COM**